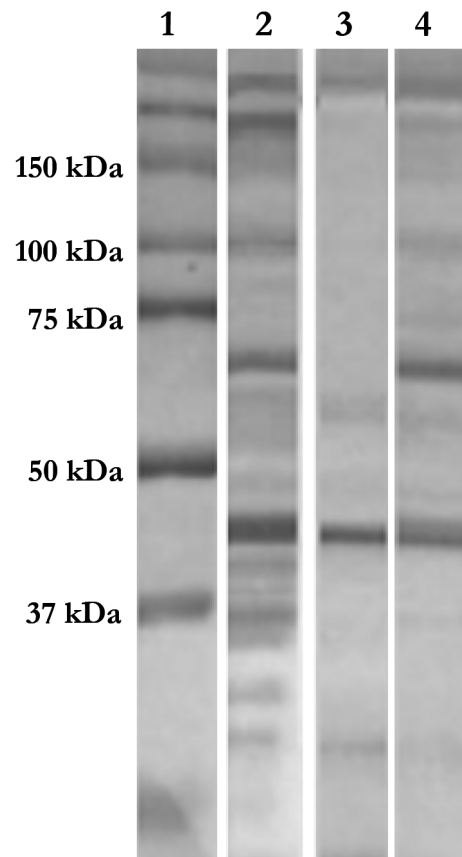
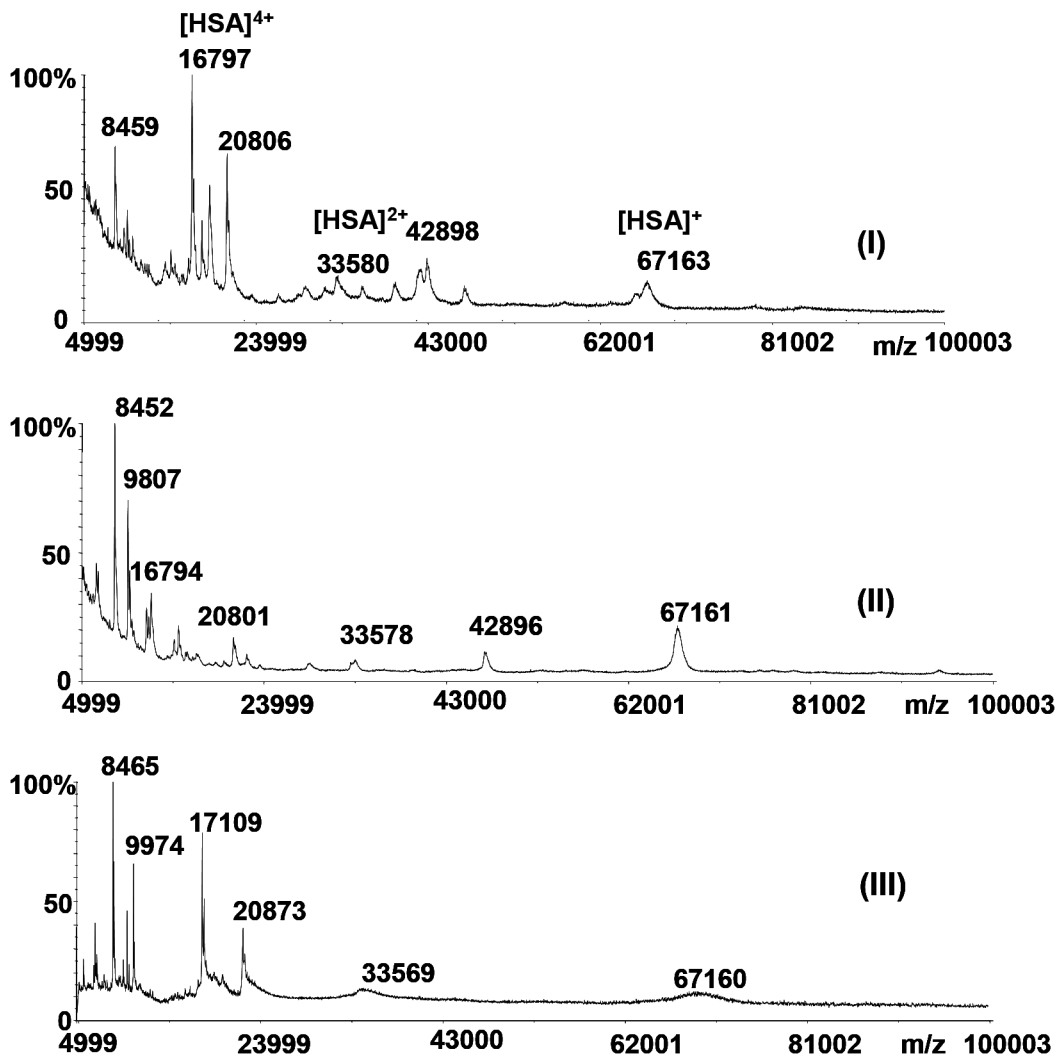


## Targeted proteomic approach in prostatic tissue: a panel of potential biomarkers for cancer detection

### SUPPLEMENTARY FIGURES AND TABLES



**Supplementary Figure S1: Electrophoresis profile of prostate porcine tissue.** Lanes: 1. Marker. 2: Whole tissue proteins extracted. 3: Depleted fraction from Multiple affinity removal spin cartridge (Agilent Technologies). 4: Depleted fraction ProteoPrep Blu Albumin and IgG depletion Medium (Sigma Aldrich).



**Supplementary Figure S2: Linear MALDI spectra of prostate human tissue from patient B.** MALDI MS spectra of (I) whole saline protein extracted from NT tissue, (II) whole saline protein extracted from T tissue, (III) hLA after “Multiple affinity removal spin cartridge” - Agilent Technologies from T tissue.

**Supplementary Table S1: Identified six protein-mix peptides**

See Supplementary File

**Supplementary Table S2: Identified proteins and peptide sequences from tumoral and non tumoral prostate tissue by MS/MS data processing**

See Supplementary File

**Supplementary Table S3: Ipa data set**

See Supplementary File